

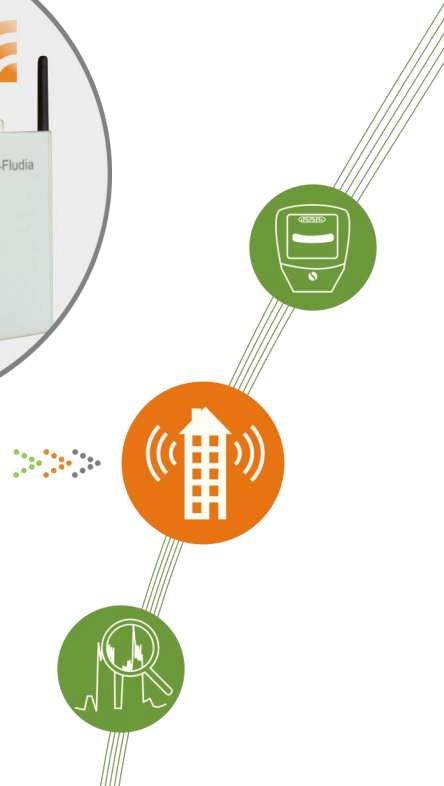
BelSenso FM410

GPRS Energy Tracker



Product range

BelSenso



BelSenso FM410 GPRS

GPRS Energy Tracker



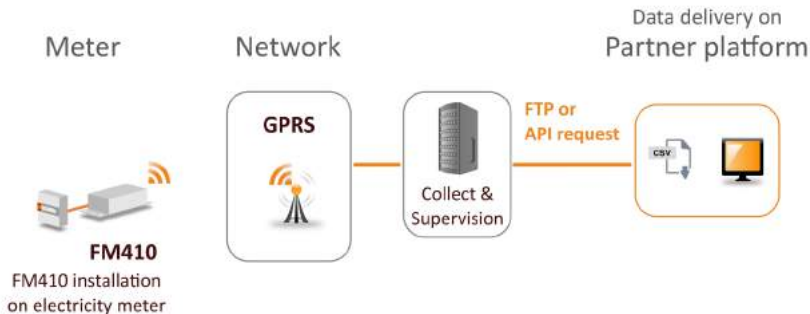
BelSenso FM410 is a plug&play energy tracker specifically designed to simplify the electricity remote monitoring of all building types and sizes. By offering direct connection to the Cloud, this helpful device allows any conventional meter to become “Smart”. The high accuracy load curve allows to visualize **your energy consumption in details** (peak load, standby level...) and to plan within 24 hours your first energy efficiency and cost saving actions.

Benefits

- ⇒ **Universal:** compliant with all meters (electronic, disk, smart)
- ⇒ **Plug & Play:** self installation (< 10mn)
- ⇒ **Self-powered:** 3 or 5 years with battery
- ⇒ **Efficient:** data <500kbytes/month
- ⇒ **Cost effective:** ROI < 1 year
- ⇒ **Data Analytics:** load curve 10sec/1mn compliant with machine learning



Operational



Implementations

- ⇒ **Energy efficiency for buildings:** load curve analysis (1mn)
- ⇒ **Budget energy control:** supervision of consumption (10mn)
- ⇒ **Installations photovoltaïques:** a precise production control (1mn)
- ⇒ **Energy audit:** high accuracy diagnostic (1mn)

General and technical features

	BelSenso FM410m	BelSenso FM410e
Input	Compliant with all types of electricity meters	
	Optical reading of electromechanical meters (Generation of pulses depending on disk rotation) Maximum speed 5 rev/sec (disk)	Optical reading of electronical meters (Generation of pulses depending on LED flashes) Maximum speed 10 flashes/sec (LED)
Output	GPRS - Quad Band - 800/900/1800/1900 MHz - Class12	
Operational	Fixing with adhesive pads (3M) Commissioning with push button and LEDs (red and green) Configuration parameters through USB port Programmable automatic remote reading (from 1 to 7 days) Battery voltage indicator T°: -15°C to +45°C	
Data	Load curve measurement: 1mn, 10mn Data file delivery using FTP or API (files in csv format) Volume <500K bytes/month, Storage 30 days	
Power supply	Internal battery 3,6V	
Size & Weight	Optical reader : 73 x 32 x 15 mm / 23 gr	35 x 25 x 17 mm / 16 gr
	Radio box: 172 x 80 x 48 mm / 311 gr	

FM410e**FM410m**

References

FM410e	GPRS Energy Tracker for electronic meters (*)
FM410m	GPRS Energy Tracker for electromechanical meters (*)
Options	
On demand	230V adapter, extension 15m cable, on-line GPRS connection

(*) The radio box includes 1 Lithium size D battery
 Battery life 3 years based on one GPRS set up call per 24h (5 years per 48h)

To contact us:

Fludia - 4 ter rue Honoré d'Estienne d'Orves - 92150 Suresnes - France
 Phone: +33 (0)1 83 64 13 90 - Email: contact@fludia.com - www.fludia.com